



CHANTLAND

PVS

Material Handling Solutions

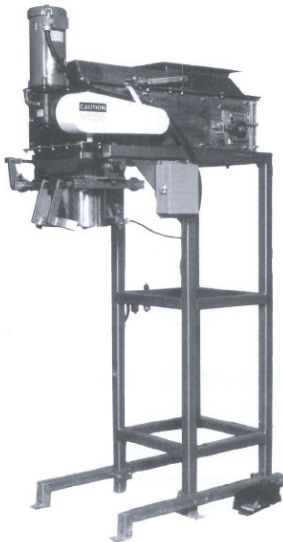
BELT-WEIGH

MODEL 4234

*Gross weighing,
open-mouthed,
bagging scale*

DESIGN FEATURES:

- Designed to handle difficult or non-free flowing products
- Speeds up to (8) 50# bags per minute
- Accuracies of +/- 1/4 of 1% (load cells) or 1/4 of 1% (scale beam) obtainable with good product flow and consistent bulk density
- 20 lb to 110 lb weight range
- Air-powered bag clamps
- Rugged construction, ease of maintenance and quick installation
- Standard units: scale-beam weighing with offset balance beam



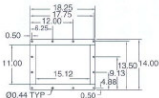
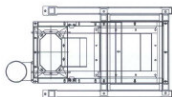
SOLUTIONS

www.chantland.com

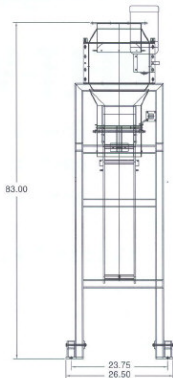
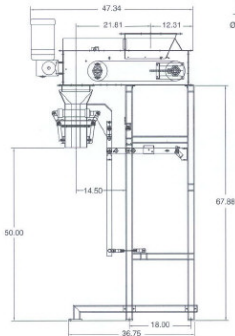
PACKERS • CONVEYORS • PALLETIZERS • SYSTEMS

BELT-WEIGH

MODEL 4234



FLANGE DETAIL



NOTE: Testing may be required to determine obtainable speeds and accuracies on your product.

STANDARD SPECIFICATIONS:

- CONSTRUCTION: heavy-duty mild steel with two coats enamel paint
- VIBRATORY TRAY: ERIEZ high-speed vibratory feeder
- CONTROLS: single-stage with adjustable flowgate
- ELECTRICAL: NEMA 12 dust tight
- SPOUT SIZE: 5 1/2" x 9" or 6 1/2" x 11"
Other sizes available
- Scale-beam weighing with offset balance beam
- UTILITY REQUIREMENTS:
Electrical: 110 volts, 60 hz single phase
Pneumatic: 8 cfm @ 80 psi

OPTIONS

- CONTROLS: two-stage bulk and dribble variable speed
- CONSTRUCTION: T304 stainless steel on contacting surfaces
- FOOD-GRADE: No. 4 polish with white sanitation belt
- Dust cover with 2" diameter vacuum collar
- CASTERS: 5" diameter with locks and outriggers
- PAINT: two-part chemical-resistant
- Load cell weighing with preset digital weight controller
- SHIPPING WEIGHT: 850 lbs
- CRATE DIMENSIONS: 4' w x 4' l x 8' h

NOTE: Specifications subject to change without notice.